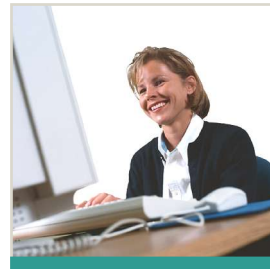
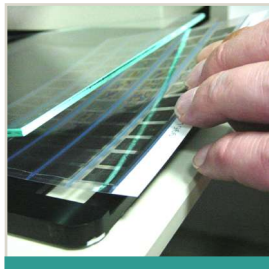
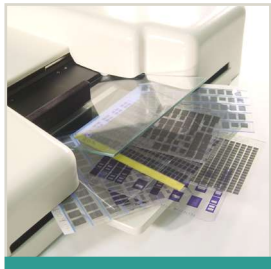


Staude **MULTI-FLY** *

* precision and
speed -
microfiche carrier
for Minolta und Canon
microfilm scanners to
scan all kind of microfiches
fully automatically.



>>>

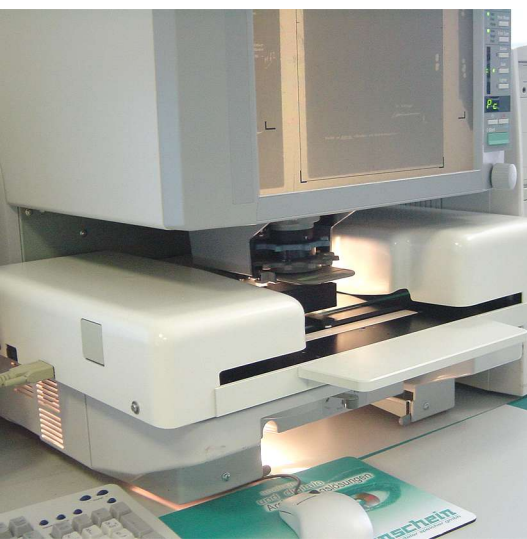
>>> **microfiche scanning
made easy**

Staude MULTI-FLY *

* precision and speed - microfiche carrier for Minolta und Canon microfilm scanners to scan all kind of microfiches fully automatically.

advantages of Staude MULTI-FLY

- * Easy handling: precise registration of film in the carrier is not necessary.
- * Compatibility: Can be used in conjunction with all Minolta and Canon microfilm scanners.
- * Versatility: All kind of microfiches can be scanned automatically.
- * Productivity: Two Staude MULTI-FLY`s are able to digitize 1.400 images per hour.
- * Efficiency: Outstanding cost-benefit-ratio.



technical data

specification:

microfiche carrier for Minolta und Canon microfilm scanners to scan all kind of microfiches fully automatically.

microfiche formats:

- 2 and 5-Channel jackets, simplex
- 5-Channel jackets, duplex
- COM-Fiches
- AB-Dick Fiches
- all kind of structured microfiches

scan resolution:

200/300/400/600 dpi - depending on utilized scanner

scan speed at 200 dpi:

- microfiche 14x28, 392 images: 25 min
- microfiche 7x14, 98 images: 6 min
- 5-Channel jacket with 75 images: 5 min

carrier control by

unstructured microfiches (jackets):

The control of unstructured microfiches (jackets) takes place with the help of a prescan. The positions of the images or frames of a jacket are recognized and are saved automatically. Upon starting the scan program all recognized images will be scanned automatically

carrier control by

structured microfiches:

The control of unstructured microfiches (jackets) takes place with the help of a three-point-adjustment. The microfiches can be scanned horizontal and vertically.

prescan time:

3 seconds for the entire microfiche

MF-Scan software

MfScan is a Software which was especially designed to work with the Staude MULTI-FLY. Nearly all microfilm scanners are going to be activated by the Twain-Driver of the particular device.

MfScan is very easy to be handled and simply structured. Many additional options, that can be found in other scanning programs, were extensively foregone, because most microfilm scanners of today are able to accomplish processes, that were just doable by a complex software (deskewing, cropping etc.) years ago, simply because of the hardware.

operating system:

Windows NT, 2000

a complete scansystem contains the following components:

- PC (pentium III with 512 RAM) with SCSI-card and monitor
- serial COM-cable
- prescan software
- MF-Scan software
- Staude MULTI-FLY
- microfilm scanner

hardware interface:

serial V24 (RS232)

dimensions:

W:550mm x H:60mm x T:400mm

weight:

10,5 kg